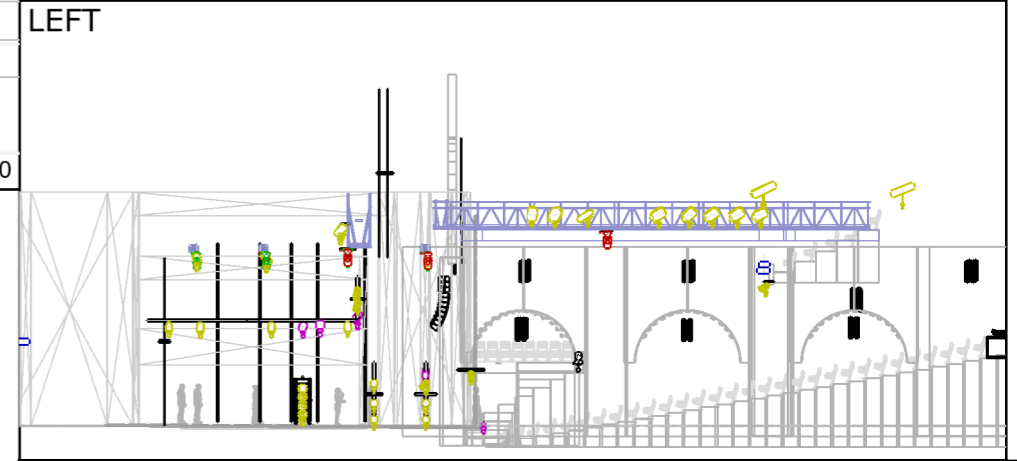
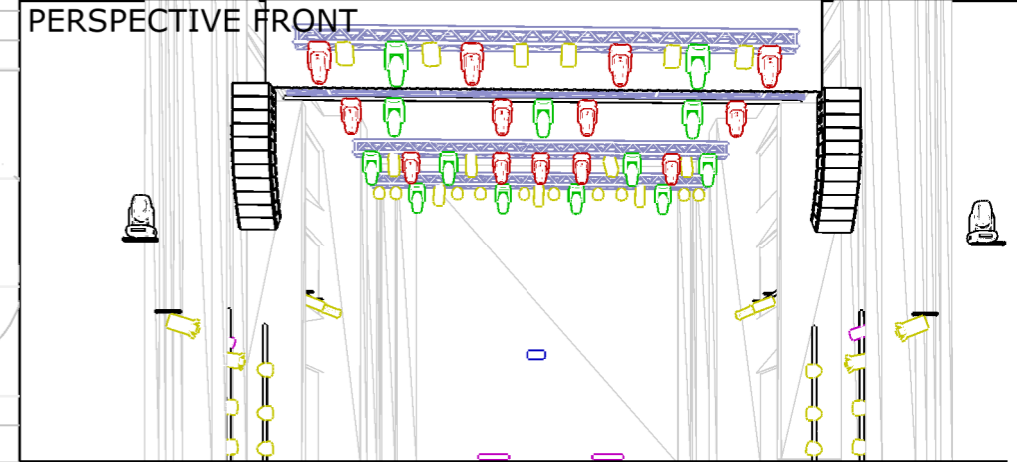


Scale: 1:200



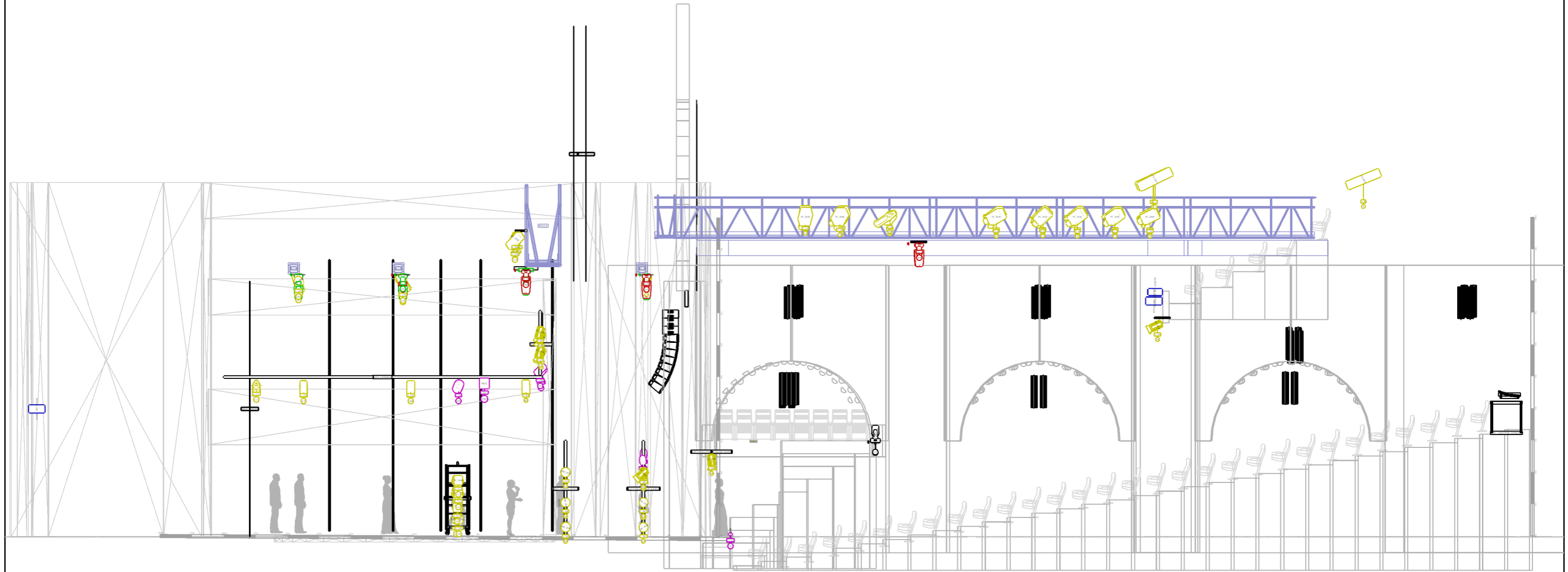
Scale: 1:69,30

**Symbol key**
















	Robin T1 Fresnel - MODE 3 (39CH) (13)		ASTERION - RGBWdx - 7CH (2)		Par 64 Short (22)
	Robin T1 Profile - MODE 3 (53CH) (15)		1000 PC (30)		Follow spot RJ Alex (3)
	Robin ProMotion - MODE 2 (33CH) (2)		2000 PC (14)		MDG Atmosphere - 2CH (1)
	Robin ParFect 150 FW RGBW - MODE 1 (17CH) (4)		Robert Juliet 613SX 28°-54° (18)		EB-PU2216B (2)
	SHOWTEC RGB LED PAR64L - 7CH (2)		ETC Source Four Zoom 15°-30° (3)		PT-MZ770 (1)

Project	Hybernia Theatre	
Project location		
Drawing author	Jiří Bránek	

LEFT



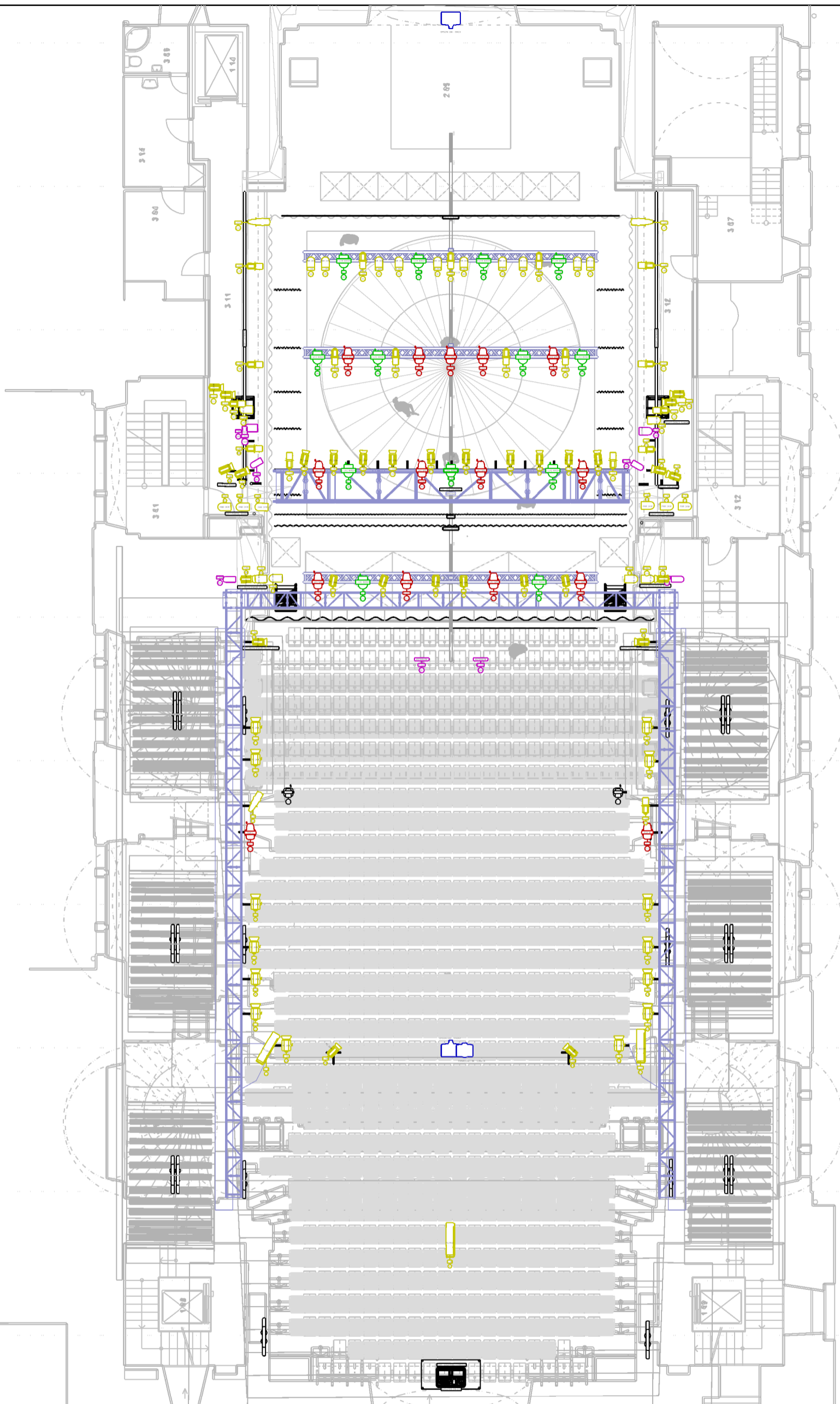
Symbol key

- |  |   |   |                                  |   |                          |
|--|---|---|----------------------------------|---|--------------------------|
|  | Robin T1 Fresnel - MODE 3 (39CH) (13)         |  | ASTERION - RGBWdx - 7CH (2)      |  | Par 64 Short (22)        |
|  | Robin T1 Profile - MODE 3 (53CH) (15)         |  | 1000 PC (30)                     |  | Follow spot RJ Alex (3)  |
|  | Robin ProMotion - MODE 2 (33CH) (2)           |  | 2000 PC (14)                     |  | MDG Atmosphere - 2CH (1) |
|  | Robin ParFect 150 FW RGBW - MODE 1 (17CH) (4) |  | Robert Juliet 613SX 28°-54° (18) |  | EB-PU2216B (2)           |
|  | SHOWTEC RGB LED PAR64L - 7CH (2)              |  | ETC Source Four Zoom 15°-30° (3) |  | PT-MZ770 (1)             |
















Project	Hybernia Theatre
Project location	
Drawing author	Jiří Bráník



LEFT



Symbol key

- |   |   |   |                                      |  |                          |
|---|---|---|--------------------------------------|--|--------------------------|
|  | Robin T1 Fresnel - MODE 3 (39CH) (13)         |  | ASTERION - RGBWxx - 7CH (2)          |  | Par 64 Short (22)        |
|  | Robin T1 Profile - MODE 3 (53CH) (15)         |  | 1000 PC (30)                         |  | Follow spot RJ Alex (3)  |
|  | Robin ProMotion - MODE 2 (33CH) (2)           |  | 2000 PC (14)                         |  | MDG Atmosphere - 2CH (1) |
|  | Robin ParFect 150 FW RGBW - MODE 1 (17CH) (4) |  | Robert Juliet 613SX 28°-54° (18) ETC |  | EB-PU2216B (2)           |
|  | SHOWTEC RGB LED PAR64L - 7CH (2)              |  | Source Four Zoom 15°-30°             |  | PT-MZ770 (1)             |

Project	Hybernia Theatre
Project location	
Drawing author	Jiří Bráník



# Hybernia Theatre Fixture report

01/2025

## MH

Unit	Channel	Circuit	Name	Location	Patch
1 LX4 WASH	201		Robe Robin T1 Fresnel	LX4	2.1
2 LX4 WASH	202		Robe Robin T1 Fresnel	LX4	2.40
3 LX4 WASH	203		Robe Robin T1 Fresnel	LX4	2.79
4 LX4 WASH	204		Robe Robin T1 Fresnel	LX4	2.118
1 LX3 WASH	205		Robe Robin T1 Fresnel	LX3	3.1
2 LX3 WASH	206		Robe Robin T1 Fresnel	LX3	3.40
3 LX3 WASH	207		Robe Robin T1 Fresnel	LX3	3.79
4 LX3 WASH	208		Robe Robin T1 Fresnel	LX3	3.118
1 LX2 WASH	209		Robe Robin T1 Fresnel	LX2 - FIX CATWALK	4.1
2 LX2 WASH	210		Robe Robin T1 Fresnel	LX2 - FIX CATWALK	4.40
3 LX2 WASH	211		Robe Robin T1 Fresnel	LX2 - FIX CATWALK	4.291
1 LX1 WASH	212		Robe Robin T1 Fresnel	LX1	5.1
2 LX1 WASH	213		Robe Robin T1 Fresnel	LX1	5.40
1 LX3 SPOT	301		Robe Robin T1 Profile	LX3	3.157
2 LX3 SPOT	302		Robe Robin T1 Profile	LX3	3.210
3 LX3 SPOT	304		Robe Robin T1 Profile	LX3	3.263
4 LX3 SPOT	305		Robe Robin T1 Profile	LX3	3.316
5 LX3 SPOT	305		Robe Robin T1 Profile	LX3	3.369
1 LX2 SPOT	306		Robe Robin T1 Profile	LX2 - FIX CATWALK	4.79
2 LX2 SPOT	307		Robe Robin T1 Profile	LX2 - FIX CATWALK	4.132
3 LX2 SPOT	308		Robe Robin T1 Profile	LX2 - FIX CATWALK	4.185
4 LX2 SPOT	309		Robe Robin T1 Profile	LX2 - FIX CATWALK	4.238
1 LX1 SPOT	310		Robe Robin T1 Profile	LX1	5.79
2 LX1 SPOT	311		Robe Robin T1 Profile	LX1	5.132
3 LX1 SPOT	312		Robe Robin T1 Profile	LX1	5.185
4 LX1 SPOT	313		Robe Robin T1 Profile	LX1	5.238
FOH L	314		Robe Robin T1 Profile	FOH TOP L	10.1
FOH R	315		Robe Robin T1 Profile	FOH TOP R	11.1
	316		Robe Robin ProMotion		
	317		Robe Robin ProMotion		
	501		Robe Robin ParFect 150 FW RGBW	LEFT PROSCENIUM SIDES	7.320
	502		Robe Robin ParFect 150 FW RGBW	RIGHT PROSCENIUM SIDES	8.360
	503		Robe Robin ParFect 150 FW RGBW	LEFT TOP SIDES	7.300
	504		Robe Robin ParFect 150 FW RGBW	RIGHT TOP SIDES	8.340
	505		Showtec RGB LED PAR64L	LEFT CATWALK	7.50
LEDPAR	506		Showtec RGB LED PAR64L	RIGHT CATWALK	8.70
ASTERION	507		ADJ Mega Go Flood Bar	FRONT FLOOR	7.120
ASTERION	508		ADJ Mega Go Flood Bar	FRONT FLOOR	7.130
MDG	1000		MDG Atmosphere APS H.O.	LEFT CATWALK	7.511